

OSU Lima Secured Wireless-Network Setup for Windows 7

1. Click on the wireless icon in the system tray and choose "Open Network And Sharing Center." (Figure 1)
2. Click on "Manage wireless networks" (Figure 2)
3. Select "Add" (Figure 3) and then choose "Manually create a network profile." (Figure 4)

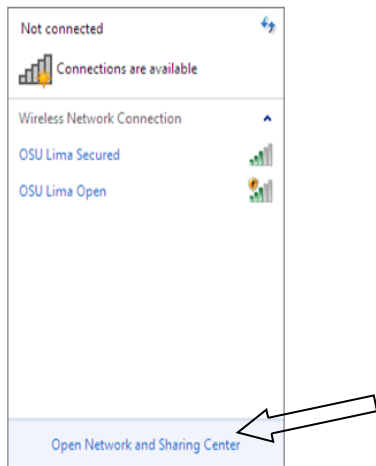


Figure 1

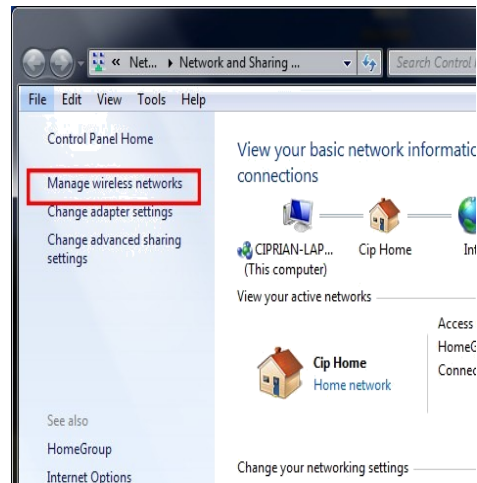


Figure 2

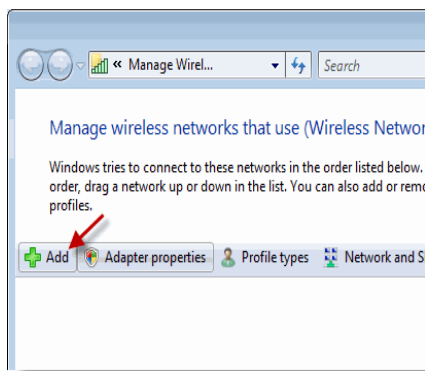


Figure 3

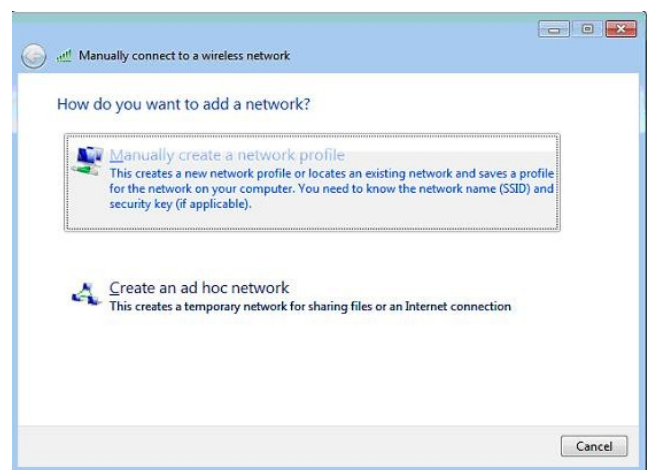


Figure 4

4. Fill in the following information: **Network name: OSU Lima Secured**, **Security Type: WPA2-Enterprise**, **Encryption Type: TKIP**. Then click **Next** (Figure 5)
5. Choose "Change connection settings." (Figure 6)

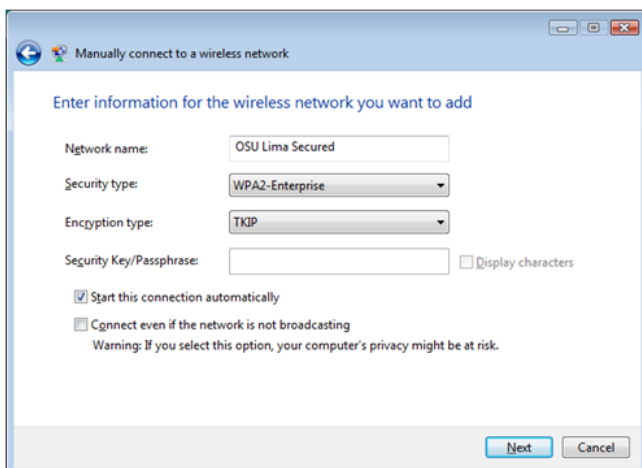


Figure 5

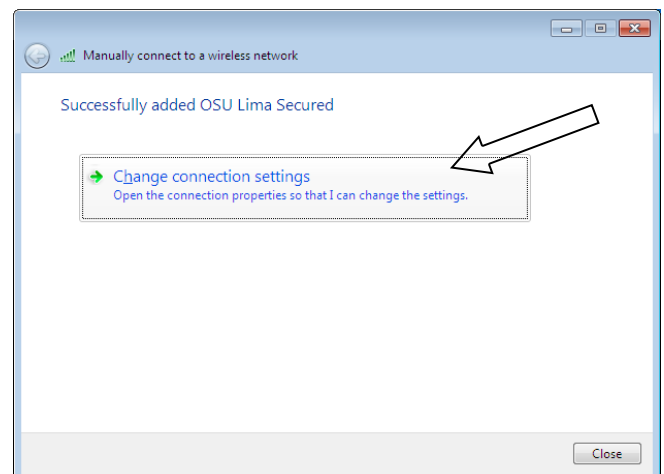


Figure 6

6. Leave the settings under “Connection” as is and click the “Security” tab at the top. (Figure 7). Verify that the settings match step 4. Then click on “Settings”
7. Uncheck the “Validate server certificate” box. Then click “Configure” (Figure 8). Uncheck “Automatically use my Windows logon...” (Figure 9) Click OK, click OK again and click Advance settings under the Security tab. (Figure 7)

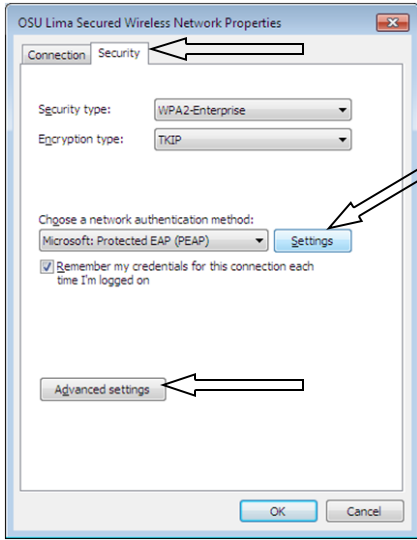


Figure 7

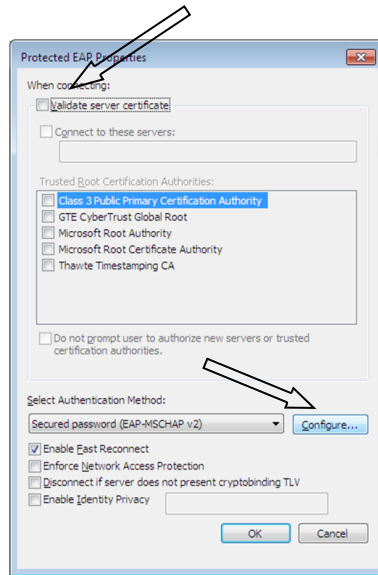


Figure 8

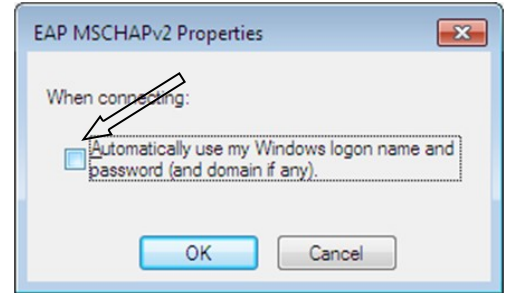


Figure 9

8. Under the “802.1X settings” tab make the following changes: (Figure 10) Check the box beside “Specify authentication mode.” Then choose “User authentication.” from the pull down menu. Then click “OK.” Click “OK” again.
9. Click on the “Additional information...” bubble that should pop up.
10. Enter the following information in the Network Authentication window: (Figure 11) User name: **lastname.number**, Password: **Lima Campus password**. Click “OK.” You should now be connected.

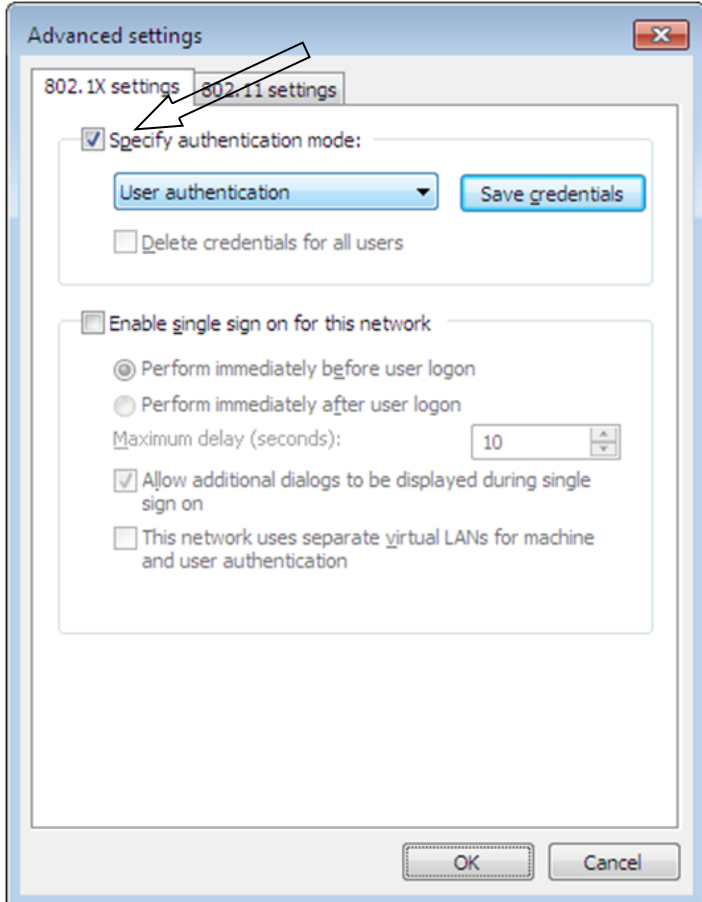


Figure 10

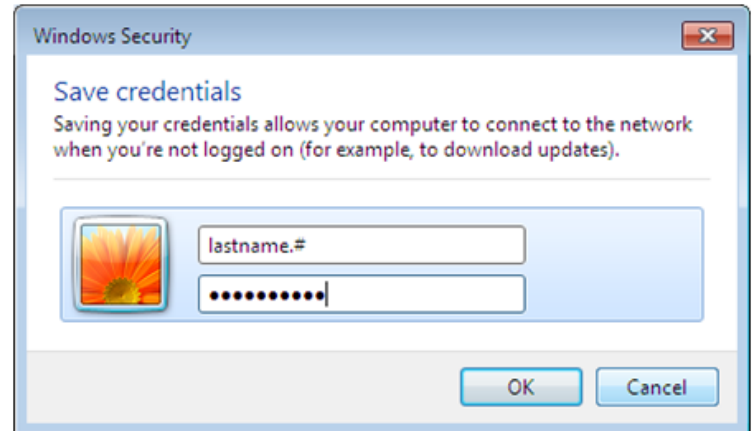


Figure 11